

Michael Dandurand, P.E.
637 East Willow Street
Gardner, Kansas 66030
www.RoyalInspectionsKC.com



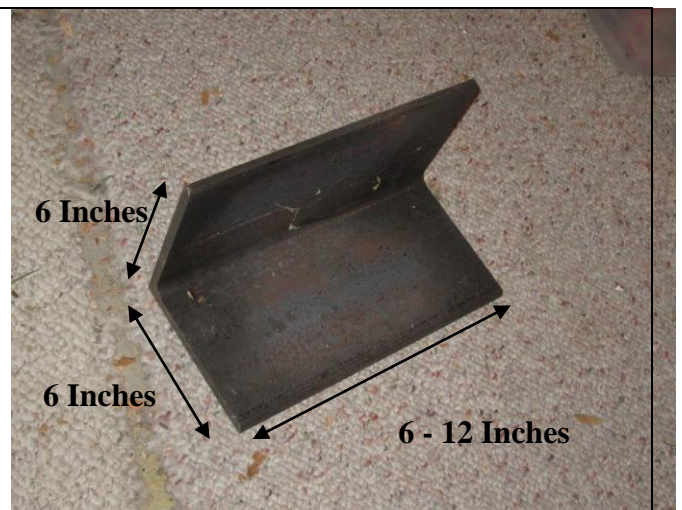
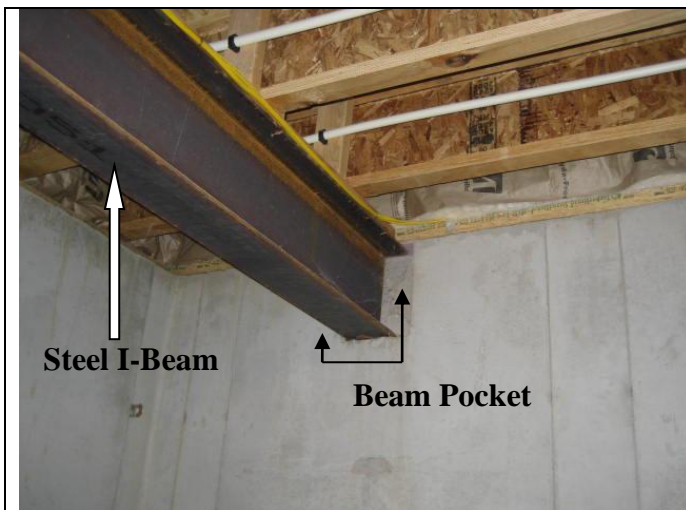
Foundation Certifications
FHA / HUD Certifications
Engineering Consultations
Licensed in Missouri & Kansas

BEAM POCKET STABILIZATION

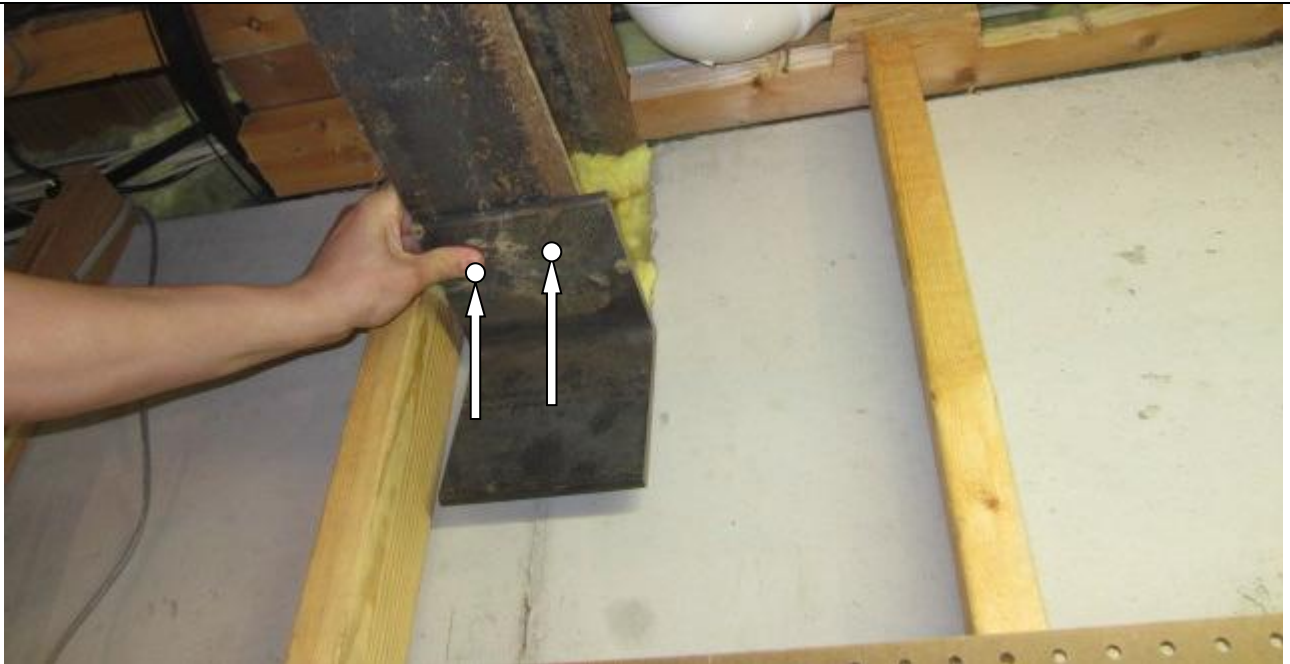


What is a Beam Pocket:

A beam pocket is a section of concrete that has been cut out of an exterior foundation wall. This 'beam pocket' supports the I-Beam at each end of the home. Often you will see interior posts supporting the I-Beam as well.



To stabilize a main steel beam we recommend using 3/8 inch angle iron at 6 inch x 6 inch. The length should be around 6-12 inches.



Two holes should be drilled through the angle iron and the horizontal face (flange) of the I-Beam in the position shown above. There should be one bolt on each side of the vertical section (web) of the I-Beam secured with a locking washer and nut.



The bolts securing the angle iron to the I-Beam should be $\frac{3}{4}$ inch x $1\frac{1}{2}$ inch. The bolts, locking washers and nuts should be Grade 8. Grade 8 bolts are stronger than commonly used Grade 5 bolts and provide higher tensile strength.